

| | | |
|-------------|-------------|-----|
| C. Westoby | 8-27-90 | 1 |
| DESCRIPTION | APP'D./DATE | REV |

SAFETY ORGANIZATION(S):

THIS FILTER HAS BEEN FORMALLY RECOGNIZED, CERTIFIED OR APPROVED BY THE LISTED AGENCY. THEREFORE, ALL TEST/REQUIREMENTS SPECIFIED IN THE LATEST REVISION OF THE FOLLOWING AGENCY STANDARDS HAVE BEEN MET:

UL RECOGNIZED
CSA CERTIFIED
OPERATING SPECIFICATIONS:
LINE VOLTAGE/CURRENT:

UL 1283
CSA 22.2 NO. 0, 0.4, 8

20 OR 30 AMP, 250VAC PHASE TO NEUTRAL/GND
20 OR 30 AMP, 440VAC PHASE TO PHASE

LINE FREQUENCY:
MAX. LEAKAGE CURRENT, EACH
LINE TO GROUND
OPERATING AMBIENT TEMP. RANGE:

50-60Hz
1.4 ma @ 120 V 60 Hz
3.4 ma @ 250 V 50 Hz
-10°C TO +40°C @ RATED CURRENT, I_r

IN AN AMBIENT, T_o, HIGHER THAN 40°C, THE MAXIMUM OPERATING CURRENT, I_o, IS AS FOLLOWS:

$$I_o = I_r \sqrt{\frac{85 - T_o}{45}}$$

RELIABILITY SPECIFICATIONS:

STORAGE TEMPERATURE:
HUMIDITY:

-25°C to +85°C
21 DAYS @ 40°C 95% RH

TEST SPECIFICATIONS:

INDUCTANCE: 20A = 4.44mH NOMINAL 30A = 1.97 mH NOMINAL
.261mH NOMINAL (GND CHOKE)

CAPACITANCE: (MEASURED @ 1 KHz, 0.25 VAC MAX., 25°C ±1°C)

PHASE/NEUTRAL TO GROUND: .018uF ±20%
PHASE TO NEUTRAL: 3.29uF ±20%

DISCHARGE RESISTOR:
PHASE/NEUTRAL TO GROUND AND
PHASE TO PHASE INSULATION
RESISTANCE:

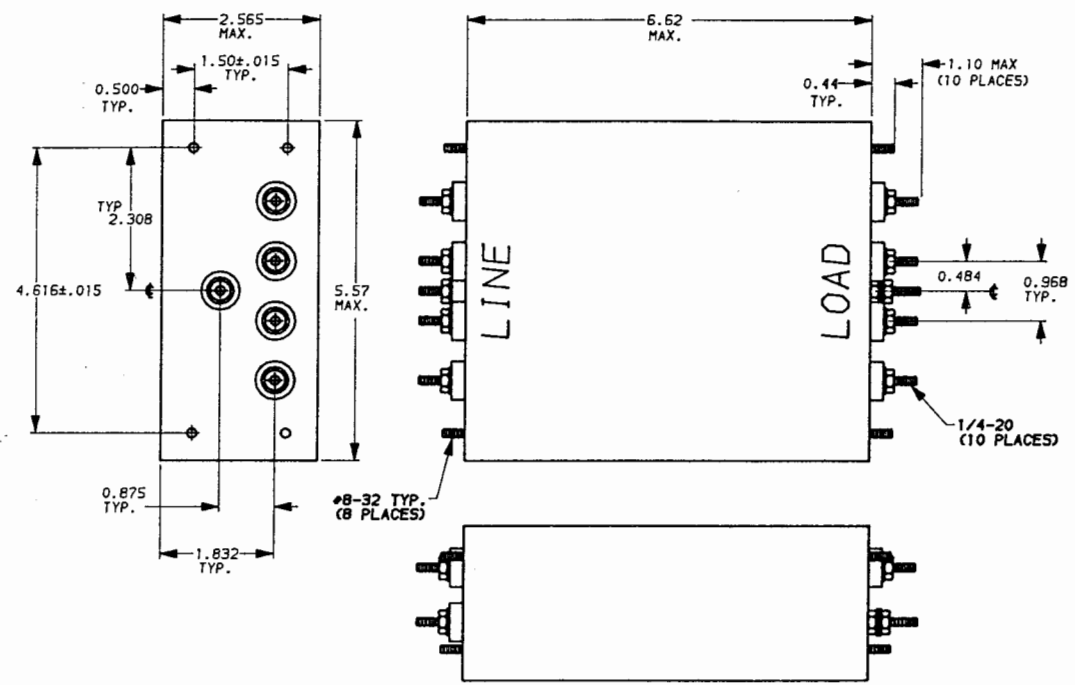
110 K Ω
5000 M Ω (MIN) AT 100 VDC
20°C AND 50% RH

RECOMMENDED RECEIVING INSPECTION HIPOT:

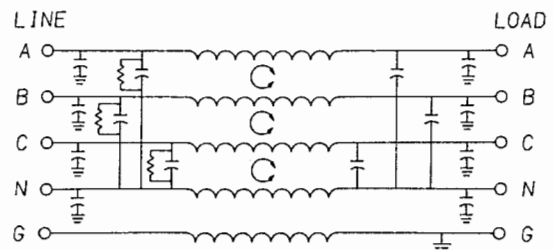
PHASE TO GROUND 1500 VAC FOR 1 MINUTE
NEUTRAL TO GROUND 1500 VAC FOR 1 MINUTE
PHASE TO NEUTRAL 1450 VDC FOR 1 MINUTE

FILTER APPROVAL:

THE BEST WAY TO SELECT AND QUALIFY A FILTER IS FOR YOUR ENGINEERING TO TEST THE UNIT IN YOUR EQUIPMENT.



NOTE: UNLESS OTHERWISE SPECIFIED, TOLERANCE TO BE ±.045



| | | 50 Ω - 50 Ω (MINIMUM) INSERTION LOSS | | | | | | | |
|-----------|-----|--|-----|-----|-----|-----|----|----|--|
| FREQUENCY | | .05 | .15 | .50 | 1.0 | 5.0 | 10 | 30 | |
| MHz | | | | | | | | | |
| COMMON | 20A | 22 | 39 | 55 | 56 | 65 | 65 | 54 | |
| | 30A | 15 | 30 | 55 | 55 | 61 | 63 | 50 | |
| DIFF. | 20A | 20 | 50 | 65 | 65 | 65 | 60 | 52 | |
| | 30A | 5 | 43 | 65 | 65 | 65 | 59 | 48 | |

This document is proprietary to CORCOM INC. and is not to be reproduced nor used for manufacturing purposes except on CORCOM's order or prior written consent.

TOLERANCE EXCEPT AS NOTED
DECIMAL: .XXX .XX .X ANGLES
ENGLISH: ± 1°
METRIC: ±
MATERIAL:
AS SUPPLIED



POWER LINE FILTER

FINISH:

| | | | |
|---------|------------|----------------------|------|
| SCALE | DATE | DRG. NO. | REV. |
| 1:2 | 5-9-88 | 20AYP6C & 30AYP6C.01 | |
| DRW. BY | ORIGINATOR | | |
| TDL | CW | | |