

523 Fast-Acting Miniature Fuse



Main Characteristics

Cartridge Miniature fuse; quick-acting (F)

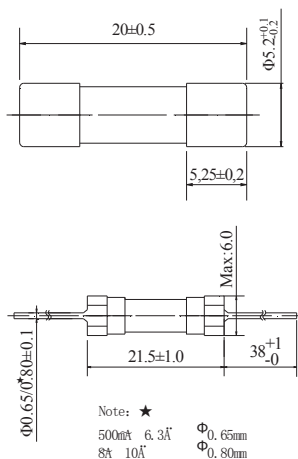
Standard

IEC 60127-2/ I

Materials

Tube: Ceramic Tube
 End Caps: Nickel-plated brass
 Axial Leads: Nickel-plated caps
 Tin-plated copper wires

Dimensions (unit in mm)



Operating Temperature

-55°C to +125°C

Storage Conditions

+10°C to +60°C
 Relative humidity: ≤75% yearly average
 without dew, maximum 30 days at 95%

Vibration Resistance

24 cycles at 15 min. each (60068-6)
 10-60Hz at 0.75mm amplitude
 60-2000Hz at 10g acceleration

Soldering Parameters

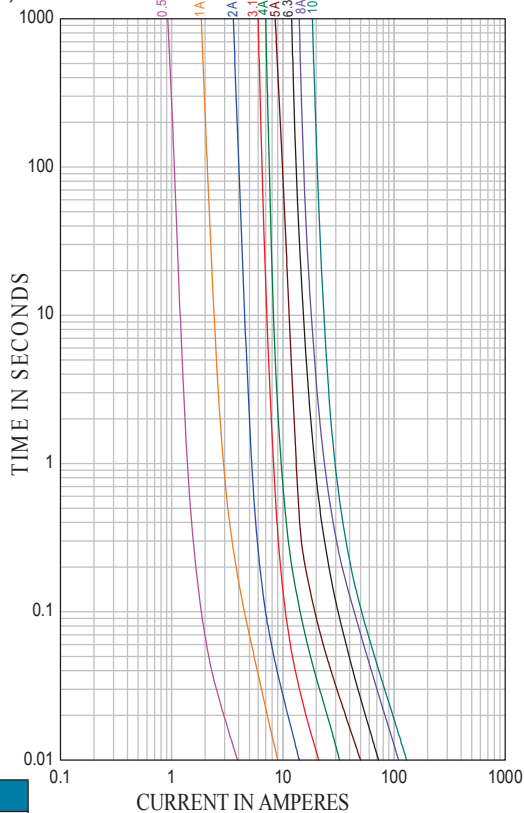
260°C. ≤5 sec (Wave Soldering)

350°C. ≤3 sec (Hand Soldering)

Soldering Peak:

260°C. 10 sec. (IEC 60068-20)

Average Time Current (I-T Curves)



Time vs Current Characteristics: IEC 60127-2/ I					
Rated Current	150%	210%	275%	400%	1000%
500mA~4.0A	>1h	<30min	10ms~2s	3ms~300ms	≤20ms
4.1A~6.3A	>1h	<30min	10ms~3s	3ms~300ms	≤20ms
6.4A~10A	>1h	<30min	40ms~20s	10ms~1s	≤30ms



Electrical Characteristics						Approvals				
Amp Code	Rated Current	Voltage Drop(mV) Max	Power Dissipation Max(W)	Nominal Melting I ² t(A ² sec)	Breaking capacity	VDE 250V	CQC 250V	cURus 125V 250V		CCC 250V
0500	500mA	1800	2.5	0.152	1500A 250V AC 50-60Hz Cosφ=0.7-0.8 10kA 125V AC	●	○	●	●	●
0630	630mA	1500	2.5	0.24		○	○	●	●	○
0800	800mA	1200	2.5	0.533		○	○	●	●	○
1100	1A	1000	2.5	0.81		○	○	●	●	●
1125	1.25A	800	4	1.23		○	○	●	●	○
1160	1.6A	600	4	1.3		●	○	●	●	○
1200	2A	500	4	1.96		○	○	●	●	○
1250	2.5A	400	4	3.06		○	○	●	●	○
1315	3.15A	350	4	4.41		●	○	●	●	●
1400	4A	300	4	10.43		○	○	●	●	○
1500	5A	250	4	25		○	○	●	●	○
1630	6.3A	200	4	53.3		●	○	●	●	●
1800	8A	200	4	121		●	○	●	●	○
2100	10A	200	4	136		●	●	●	●	○

Notes: Permissible continuous operating current is ≤100% at ambient temperature of 23°C (73.4°F)

Ordering Information

Series	Amp code	Packaging Code	Qty
523			

