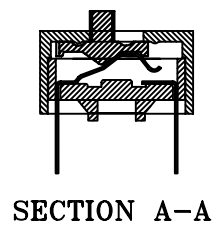
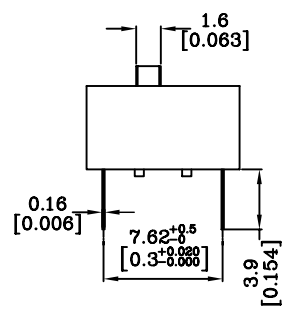
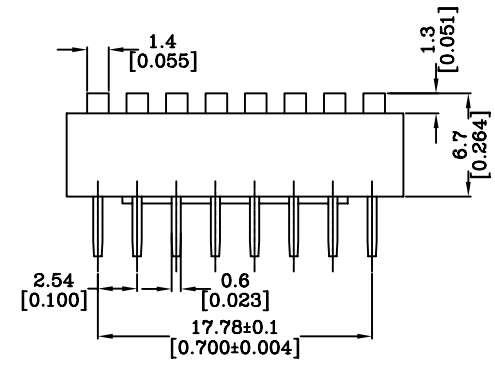


P.C.B LAYOUT



SECTION A-A

MATERIALS

BASE:UL94V-0 PBT Thermoplastic,
Color:Black
COVER:UL94V-0 PBT Thermoplastic,
Color:Red,Black,Blue
ACTUATORS:UL94V-0 PBT
Thermoplastic, Color:White
TERMINAL:Copper Alloy with gold plating

MECHANICAL

Operation Force:0.2kgf max.
Stroke:2.0mm
Operation Temp: -20°C to 70°C
Storage temp: -40°C to 85°C

ELECTRICAL

Electrical Life: 3000 operations per switch 24VDC,25mA.
Non-Switching Rating: 100mA,500VDC.
Switching Rating:25mA,24VDC.
Contact Resistance:50m max.at initial.
Insulation Resistance:(at 500VDC) 100 MΩ mn.
Dielectric Strength:500VAC/1minute.
Capacitance:5PF max.
Circuit:Single pole single throw.

REV.NO	DESCRIPTION	DRAWN	CHECKED	APPROVED
ONE	NEW RELEASE			

SOLDERING AND CLEANING PROCESSES

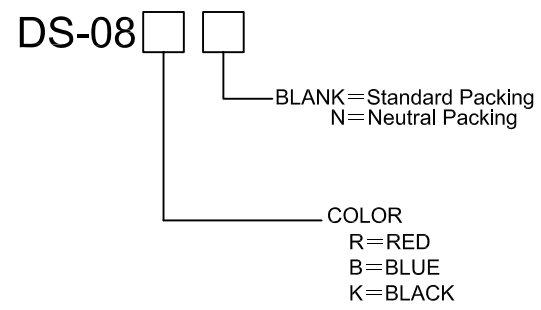
For best results,please followthese recommendation:
Keep all switch contacts in their "OFF" position for all operations.
WAVE SOLDERING:
Recommended solder temperature at 500°F(260°C)max 5 seconds.
HAND SOLDERING:
Use a soldering iron of 30 Watts of less,controlled at 608°F (320°C)
approximately 2 seconds while applying solder.

All DIP Switches are shipped in standar IC tube.

DS-08 PACKAGE

SERIES	NO.of POS	PER TUBE	PER BOX
DS	08	22pcs	1100pcs

HOW TO ORDER



GENERAL TOLERANCE	ANGLE TOLERANCE	PROJECTION	⊕	DIP SWITCHES		
X. ±0.50	X. ±5°	UNITS	MM	MODEL	DS-08	
.X ±0.30	.X ±3°	SHEET SIZE	A4			
.XX ±0.20	.XX ±2°					
DRAWING TYPE	CUSTOMER			DEVETECH ELECTRONICS CO. LTD		
SCALE	2:1	SHEET				1
DRAWING NO						1 SH