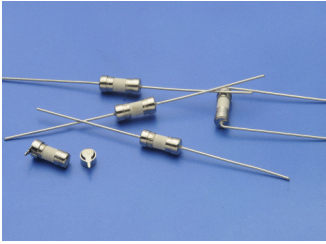


334 Time-Lag Subminiature Fuse



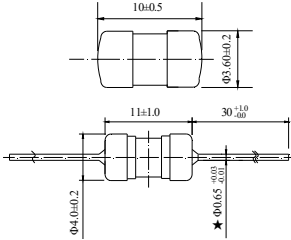
Main Characteristics
Axial subminiature fuse; Time-Lag (T)
Standard

IEC-60127-3/IV

Materials

- Tube: Ceramic Tube
- End Caps: Nickel plated brass
- Axial Leads: Nickel plated caps
- Tin plated copper wires

Dimensions (unit in mm)



- ★ 200mA~7A: Φ0.65mm
- 8A~10A: Φ0.80mm

Operating Temperature

-55°C to +125°C

Storage Conditions

- +10°C to +60°C
- Relative humidity: ≤75% yearly average
- Without dew, maximum 30 days at 95%

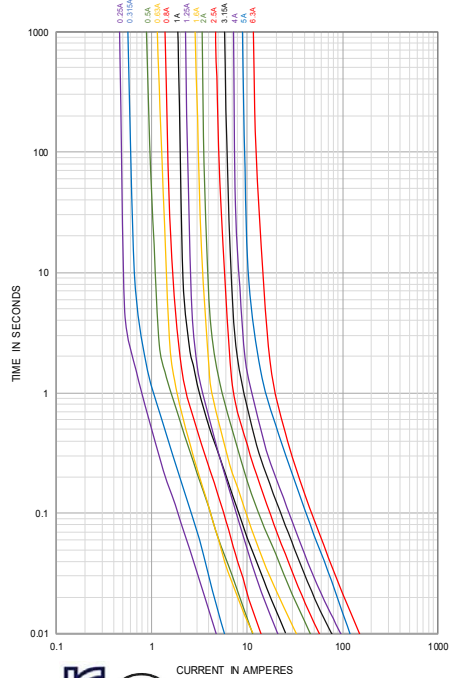
Vibration Resistance

- 24 cycles at 15 min. each (60068-6)
- 10-60Hz at 0.75mm amplitude
- 60-2000Hz at 10g acceleration

Soldering Parameters

- 260°C. ≤5 sec (Wave Soldering)
- 350°C. ≤3 sec (Hand Soldering)
- Soldering Peak:
- 260°C. 10 sec. (IEC 60068-20)

Average Time Current(I-T Curve)



Time vs Current Characteristics: IEC-60127-3/IV					
Rated Current	150%	210%	275%	400%	1000%
200mA~10A	>1h	<2min	400ms~10s	150ms~3s	20ms~150ms



Electrical Characteristics

Amp Code	Rated Current	Max. Voltage	Voltage Drop Max (mV)	Max. Power Dissipation (mW)	Nominal Melting I ² t(A ² sec)	Breaking Capacity	Approvals							
							cULus	cURus	VDE	CQC	TUV	PSE	KC	SEMKO
0200	200mA	250V AC	260	200	0.1296	50A@125V AC 35A or 10In@250VAC 50-60Hz Cosφ=1.0	○	○	○	○	●	○	○	○
0250	250mA		240	220	0.221		●	●	○	●	●	○	○	○
0300	300mA		230	250	0.292		●	●	○	○	○	○	○	○
0315	315mA		220	250	0.336		●	●	○	○	●	○	○	○
0350	350mA		210	250	0.397		●	●	○	○	○	○	○	○
0375	375mA		210	280	0.456		●	●	○	○	○	○	○	○
0400	400mA		200	280	0.722		●	●	○	○	○	○	○	○
0500	500mA		190	310	1.0		●	●	●	●	○	○	○	○
0630	630mA		180	360	1.35		●	●	●	○	○	○	○	○
0750	750mA		170	430	1.82		●	●	○	○	○	○	○	○
0800	800mA		160	430	1.56		●	●	●	○	○	○	○	○
1100	1.00A		140	500	6.5		●	●	●	●	○	●	●	●
1125	1.25A		130	600	4.62		●	●	●	●	○	●	●	●
1150	1.50A		120	730	10.6		●	●	○	○	○	○	○	○
1160	1.60A		120	730	10.9		●	●	○	○	○	●	●	●
1200	2.00A		100	870	20.3		●	●	●	○	○	●	●	●
1250	2.50A		100	1000	32.5		●	●	●	○	○	●	●	●
1300	3.00A		100	1200	59.3		●	●	○	○	○	○	○	○
1315	3.15A		100	1200	74.52		●	●	●	○	○	○	○	○
1350	3.50A		100	1200	90.3	●	●	○	○	○	○	○	○	
1400	4.00A		100	1400	94.1	●	●	●	●	○	●	●	●	
1500	5.00A	100	1400	121	●	●	○	○	○	●	●	●		
1630	6.30A	100	1400	225	●	●	○	○	●	○	○	○		
1700	7.00A	100	1400	110	●	●	○	○	○	○	○	○		
1800	8.00A	100	1400	121	●	●	○	○	○	○	○	○		
2100	10.00A	100	1400	196	●	●	○	○	○	○	○	○		

Note: (1) Permissible continuous operating current is ≤100% at ambient temperature of 23°C (73.4°F)
(2) The cULus and cURus certification by 125V and 250V; the others certification by 250V.

Ordering Information

Series	Amp Code	Supplementary Code	Qty
334			