

Thermostat DVKSD301

SPECIFICATION

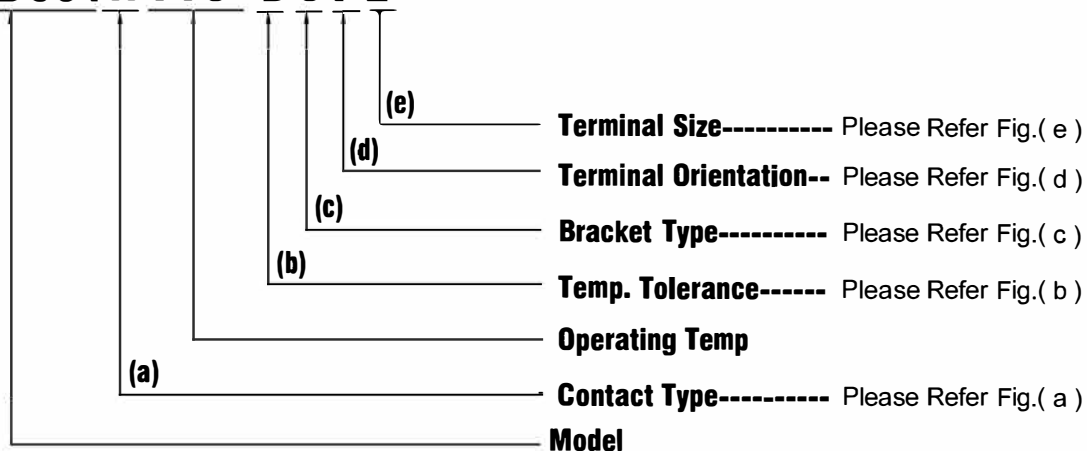
- Electrical Rating : 16A 125V AC (Resistive Load)
10A 250V AC (Resistive Load)
16A 250V AC (Resistive Load)
- Operating Temp : 50 ~ 175 °C (UL.CUL 205 °C)
- Differential : 10~30K (15K Standard)
- Temp. Tolerance : Operating Temp.±3K±5K
- Heat Durability : 220°C Max. (PPS)
- Circuit Resistance : 50mΩ Max.
- Insulation Resistance : 100MΩ Min.at DC500V
- Dielectric Strength : AC 1000V for One Minute.
or AC 1800V for One Second.
- Operating Life : 100000 Cycles (16A 125V/10A 250V AC)
10000 Cycles (16A 250V AC)



HOW TO ORDER

MODEL CODE (FULL CODE)

DVKSD301A 110 - B C F 2



(a) CONTACT TYPE :

A = Contact Opens When Temperature Rises to Set Point (Normally Closed)



B = Contact Closes When Temperature Rises to Set Point (Normally Open)



M = Manual Reset

(b) TEMP. TOLERANCE : (*=STANDARD)

Grade	A	*B
Action ±°C	3	5
Reset ±°C	4	8

• The Grade of Temp. Tolerance is "A", When The Operating Temp. is Less Than 105°C.

• The Grade of Temp. Tolerance is "B", When The Operating Temp. is Over 106°C.



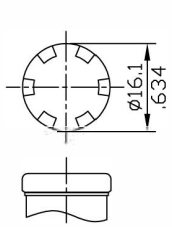
Thermostat DVKSD301

(c) BRACKET TYPE :

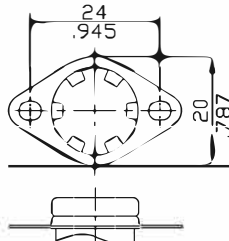
• FIXED BRACKET

* STAINLESS STEEL CAP : D,DL,V,T TYPE

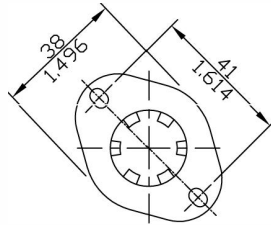
SCREW TYPE : M4x0.7 L:6mm (STD)
M5x0.8 L:6mm (STD)
#6-32UNC
#8-32UNC



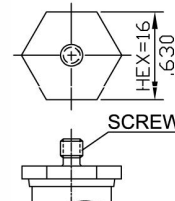
C TYPE



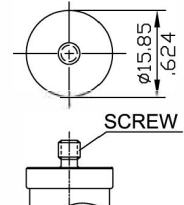
B TYPE



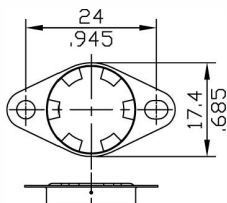
E TYPE



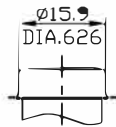
H TYPE



R TYPE



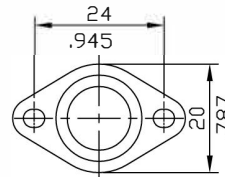
X TYPE



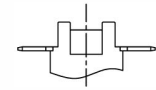
* D TYPE



* DL TYPE



* V TYPE
(OPEN CAP)

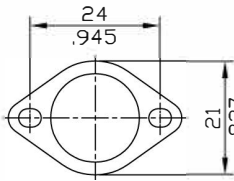


P TYPE
(4 POSTS SHELL)

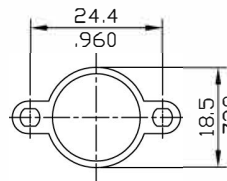
mm
inch

• LOOSE BRACKET

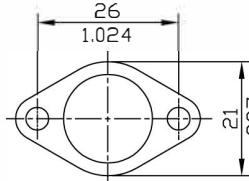
* STAINLESS STEEL CAP : U TYPE



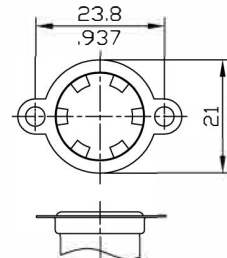
O TYPE



* U TYPE

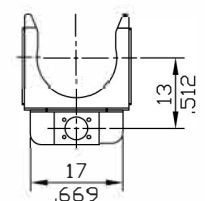


M TYPE



S TYPE

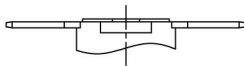
(ONE WING)



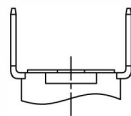
G TYPE
(Screw or Spot Available)

mm
inch

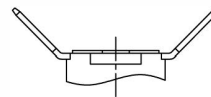
(d) TERMINAL ORIENTATION:



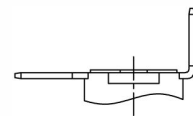
F TYPE
(0°)



R TYPE
(90°)

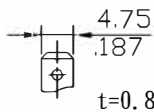


T TYPE
(45°)



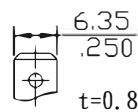
L TYPE
(90°X1)

(e) TERMINAL SIZE:



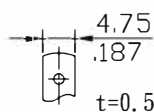
TYPE 1

Amp #187 TAB



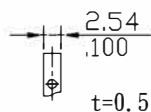
TYPE 2

Amp #250 TAB



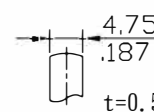
TYPE 3

SOLDER TAB



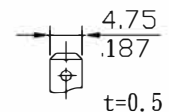
TYPE 4

DIP TAB



TYPE 6

WELD TAB



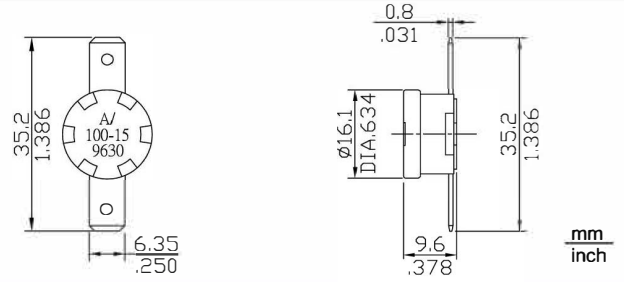
TYPE 7

Amp #187 TAB

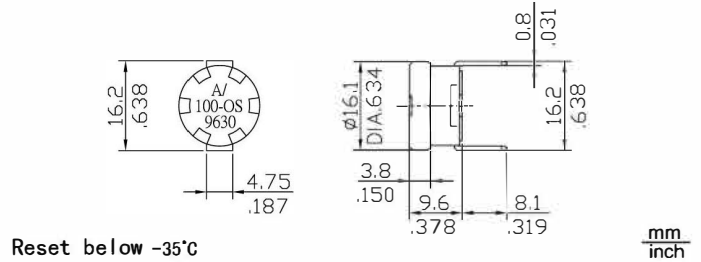
mm
inch

Thermostat DVKSD301

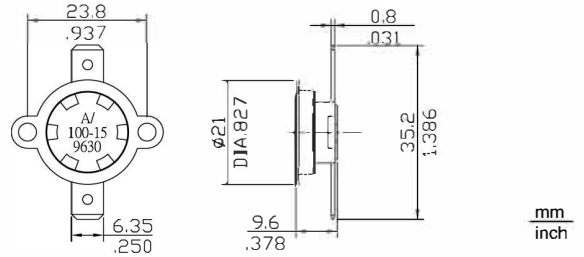
DVKSD301A-CF2



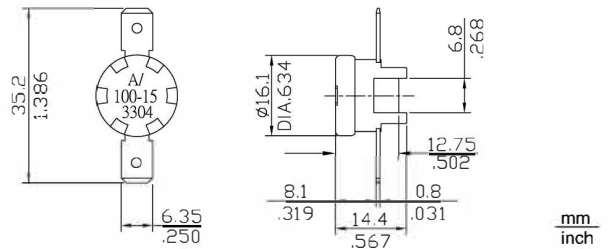
DVKSD301A-CR1-OS(ONE SHOT)



DVKSD301A-SF2(LOOSE BRACKET)



DVKS D301 A-PF2(4-POS)



DVKSD301A-XF2(FIX BRACKET)

