



DEVETECH ELECTRONICS, CO. LTD.

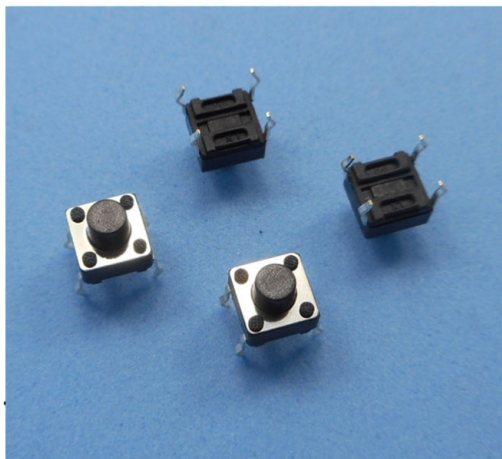
Address: 11/F.,F.Block, Hang Lok Building, 130Wing Lok St., Hong Kong.

Address: A3L1, Youpinyishu, Huanmei Rd., Dameisha, Yantian district, Shenzhen, China

Tel: (86) 13632770721 Email: sales@devetechelectronics.com Website: www.devetechelectronics.com

TACT SWITCH

6x6 SIDE PUSH TYPE WITH SUPPORTING TERMINAL THROUGH HOLE



FEATURES

1000 pcs/box

APPLICATION

Data storage, server
Instrumentation
Audio, OA equipment

SPECIFICATION

Contact rating	50mA 12VDC
Contact resistance	50mΩ max (initial)
Insulation resistance	100mΩ (minDC 250V)
Dielectric strength	AC250V (50/60Hz for 1min.)
Operating force	250 (±50gf)
Operating life	100.000 cycles
Operating temperature	-20°C~+70°C

HOW TO ORDER

DVKFC-A06-□□.□250

H (mm):

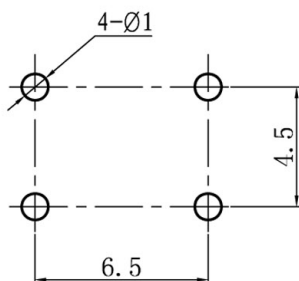
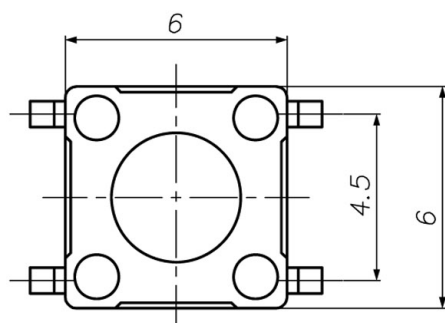
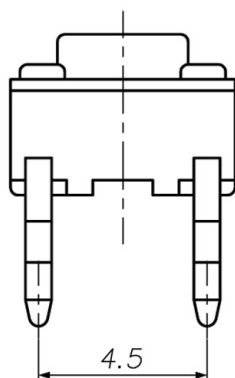
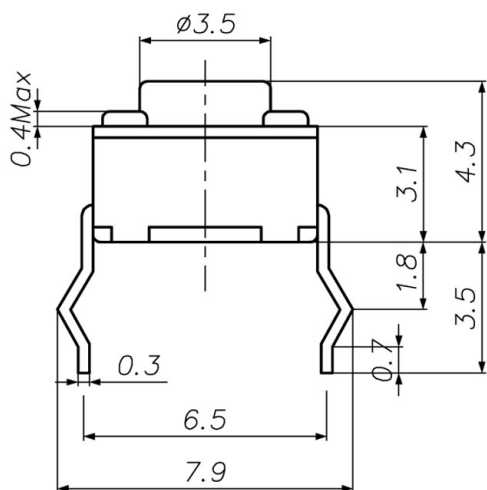
04,3	13,0
05,0	14,0
06,0	15,0
07,0	16,0
08,0	17,0
09,0	18,0
10,0	19,0
11,0	20,0
12,0	21,0

CIRCUIT

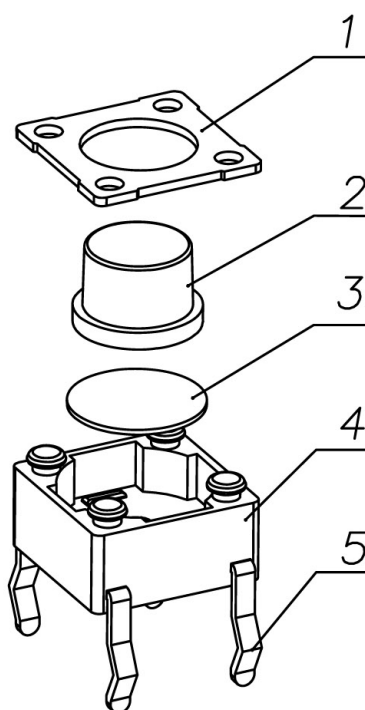
()—INDICATES MOMENTARY POSITION

CIRCUIT CHARACTERISTICS

CONTACT POSITION		CIRCUIT DIAGRAM
OFF	(ON) 1 - 3 2 - 4	



P.C.B. HOLE DETAIL



2.8mm