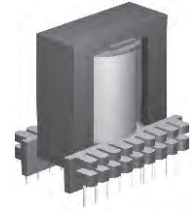


## 30-60W ERL28 - 4 OUTPUT FLYBACK TRANSFORMERS FAT 74043 SERIES



### FEATURES

Primary / Secondary Insulation  $\geq 4000V$   
 Primary Auxiliary Insulation  $\geq 1500V$   
 Creepage distances Primary / secondary  $\geq 6mm$

### OPTIONS

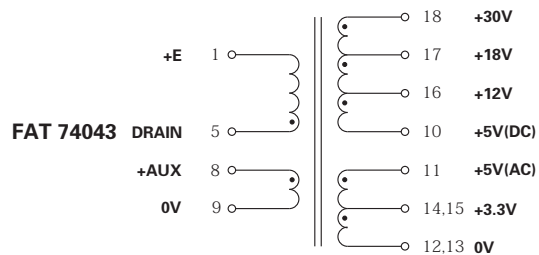
Bulk packaging is standard  
 Custom design available

### COMMON APPLICATIONS

AC-DC converters  
 DC-DC converters  
 Switch Power supplies  
 FAPS: Flyback, Forward and Push-pull  
 FAPS: Half Bridge and Full Bridge

### TECHNICAL INFORMATION

Ambient temperature  $< 50^{\circ}C$   
 Construction conforms to CEI950, CEI335, CEI61558 for reinforced insulation  
 Exclusively uses UL94-V0 listed materials



### ELECTRICAL CHARACTERISTICS

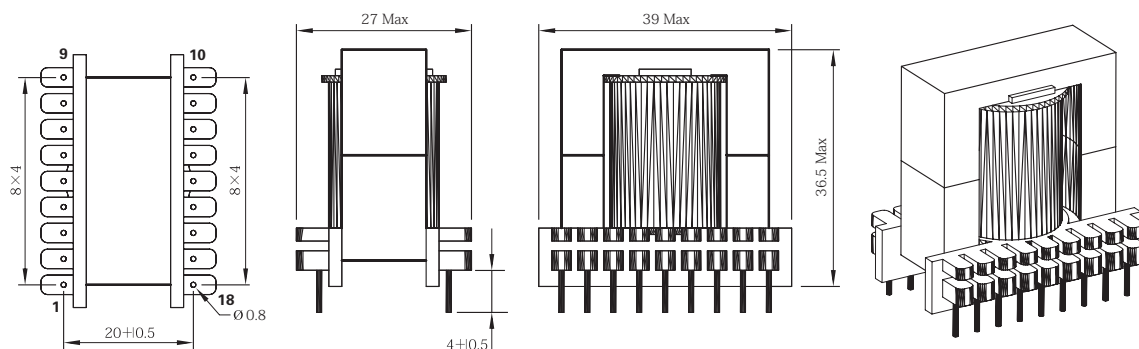
Control IC Manufacturer	Control IC P/N	Input voltage	Power	Frequency
Power Integrations	TOP246Y	185-265Vrms	60 w	66/132 kHz
Power Integrations	TOP246Y	85-265Vrms	45 w	66/132 kHz

SIZE ETD29 - 4 OUTPUTS : 5 + 12/5 + 12v - FLYBACK TRANSFORMER							
Part Number	Output Power max	Windings					
		Pins	Turns	Voltage	Current max	Inductance [ +/-10% ]	
FAT 74043	60W	Pri	5-1	45	90 [VOR]	3Apeak	500 $\mu$ H
		Aux	8-9	7	15 Vdc	0.5 Adc	
		S1	14+15/12+13	2	3.3 Vdc	7 Adc	
		S2	11/12+13	3	5 Vdc	sum S1+S2	
		S3	16-10	4	12 Vdc	2 Adc	
		S4	17-10	7	18 Vdc	2 Adc	
S5	18-10	13	30 Vdc	0.5 Adc			

Note: PCB Drilling Diameter = 1.3mm

Note: Regulation with auxiliary winding

### PHYSICAL CHARACTERISTICS



ALL DIMENSIONS IN MM